

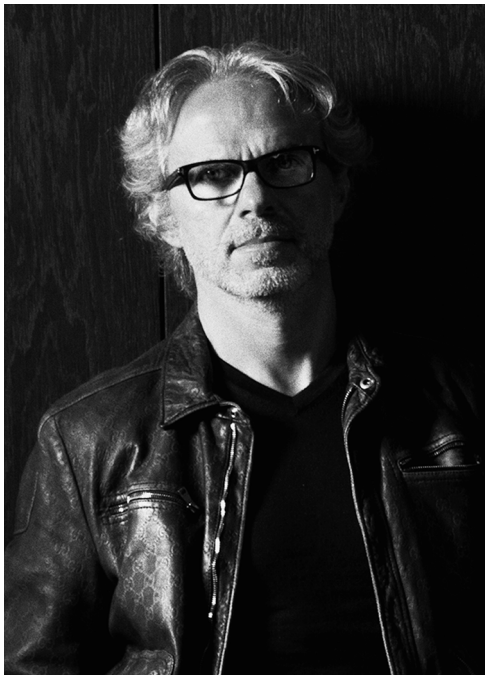
dnd

L'architettura
per le mani
*Handling
architecture*

Alfonso Femia
af*design

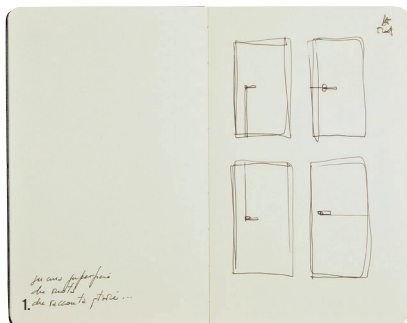


Alfonso Femia

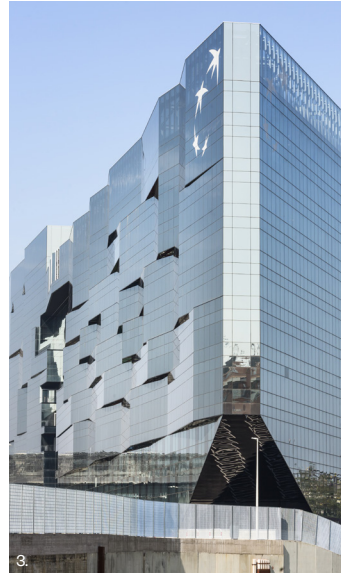


Originario di Taurianova (Reggio Calabria), Alfonso Femia vive partendo e ritornando a Genova da Milano e Parigi. Laureato presso la Facoltà di Architettura dell'Università di Genova nel 1992, è iscritto all'Ordine degli Architetti di Genova, dell'Île-de-France e della Svizzera. Ha insegnato Progettazione Architettonica alla Kent State University di Firenze, alla Facoltà di Architettura di Ferrara e a quella di Genova. Fondatore di 5+1 nel 1995, crea 5+1AA nel 2005 e 5+1AA Parigi nel 2007. Vince numerosi concorsi internazionali ed è stato visiting professor nelle principali università italiane e internazionali. Sviluppa una "ricerca intorno alla materia" che lo porta a collaborare a progetti di design con aziende internazionali. Tra i suoi progetti, la nuova sede BNL-BNP Paribas a Roma, i Docks di Marsiglia, le OGR di Torino. Nel 2017 trasforma la denominazione di 5+1AA in AF517 ovvero Atelier(s) Alfonso Femia.

Born in Taurianova (Reggio Calabria), Alfonso Femia lives in a state of departure and return to Genoa from Milan and Paris. With a degree from the School of Architecture of the University of Genoa in 1992, he is a member of the Architects Associations of Genoa, Île-de-France and Switzerland. He has taught Architectural Design at Kent State University in Florence, and the Schools of Architecture of Ferrara and Genoa. He was a founder of 5+1 in 1995, and created 5+1AA in 2005 and 5+1AA Paris in 2007. He has won many international competitions, and has been a visiting professor at leading Italian and international universities. He develops "research on matter" that has led to design projects with international companies. His projects include the new BNL-BNP Paribas headquarters in Rome, the Docks of Marseille, the OGR in Turin. In 2017 he changed the name of 5+1AA to AF517, i.e. Atelier(s) Alfonso Femia.



1. Studio maniglia (IN) finito su taccuino - Study for (IN) finito lever on notebook



2. Nuova Biblioteca, La Spezia/Italy, (2012-2016) – 3. BNL-BNP Paribas Headquarters, Roma/Italy, (2012-2017) – 4. I Giardini di Gabriel, Asnières-sur-Seine/France, (2013-2016) – 5. Marseilles Docks, Marseille/France, (2009-2015)

(IN)finito



**Selezionato
ADI DESIGN 2019**
*Selected for
ADI DESIGN 2019*



Come un filo bidimensionale che arriva dai bordi della porta, disegna la maniglia e poi continua il suo viaggio, ora verso l'altro lato, ora verso l'alto, ora nell'altra direzione.

Like a two-dimensional line that arrives from the edges of the door and draws the handle before continuing on its way, towards the other side, upward, in the opposite direction.

(IN)fnito

**design:
Alfonso Femia**

made in italy



IF10
ONO

006-

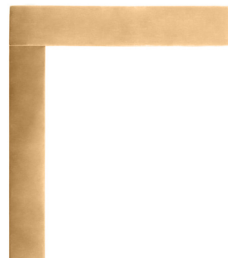
Ottone
Solid brass



PCS
Power cromo satinato
Power satin chrome



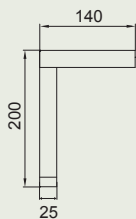
ONO
Nero
Black



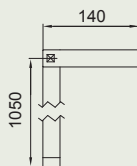
ONA
Ottone naturale
Natural brass



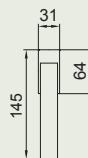
Selezionato ADI DESIGN 2019
Selected for ADI DESIGN 2019



IF10



IF10/L
Placca lunga 1050 mm
Long plate 1050 mm



VIS ED25V

LOCK ED25TS

(IN)finito





Il modello di maniglia
si declina in diverse
soluzioni.

*The door handle
model comes in
different versions.*

La rosetta diventa
un elemento minimo
e si innesta alla base
della maniglia.

*The rose becomes a
minimal element and
gets in position at the
handle base.*

(IN)finito

design:
Alfonso Femia

made in italy



IF01
ONA

010-

Ottone
Solid brass

new 2021



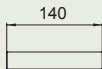
PCS
Power cromo satinato
Power satin chrome



ONO
Nero
Black



ONA
Ottone naturale
Natural brass



IFO1

(IN)finito





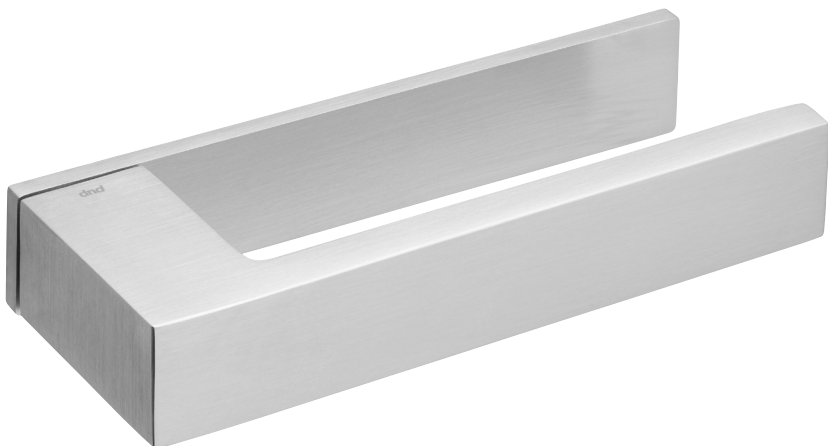
La placca riprende
il profilo della maniglia,
si fa sottile e si adatta
orizzontalmente alla
superficie della porta.

*The plate is shaped
like the door handle,
it becomes thin and
conforms horizontally
to the door surface.*

(IN)finito

design:
Alfonso Femia

made in italy



IF11
PCS

014-

Ottone
Solid brass

new 2021



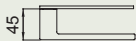
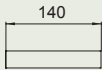
PCS
Power cromo satinato
Power satin chrome



ONO
Nero
Black



ONA
Ottone naturale
Natural brass



IF11

(IN)finito



**maniglione /
pull handle**



A completare la collezione di (IN)finito, un maniglione dall'efficace design lineare, il cui profilo si presenta in diverse lunghezze che seguono la verticalità della porta.

To complete the collection (IN)finito, a pull handle with an effective, linear design. Its shape comes in several lengths, all following the verticality of the door.

(IN)finito

maniglione /
pull handle

design:
Alfonso Femia

made in italy



IF31
ONA

018-

Ottone
Solid brass

new 2021



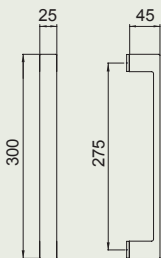
PCS
Power cromo satinato
Power satin chrome



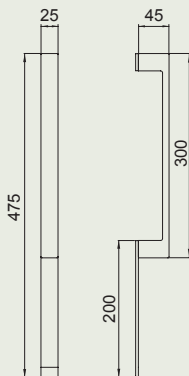
ONO
Nero
Black



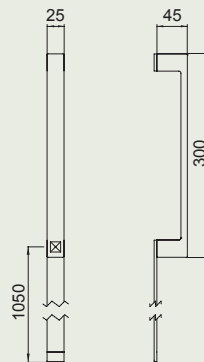
ONA
Ottone naturale
Natural brass



IF27



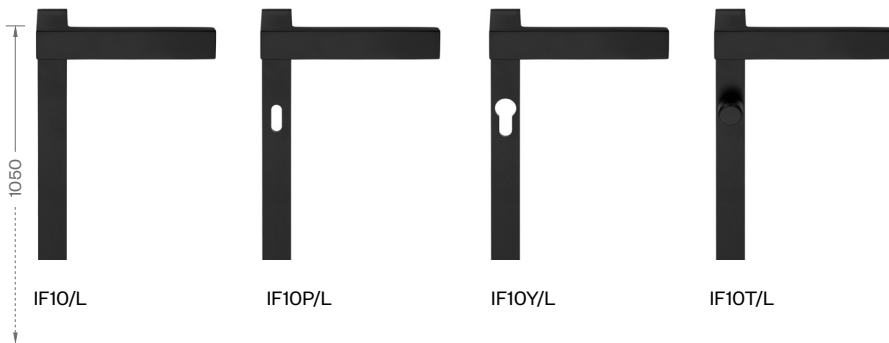
IF29



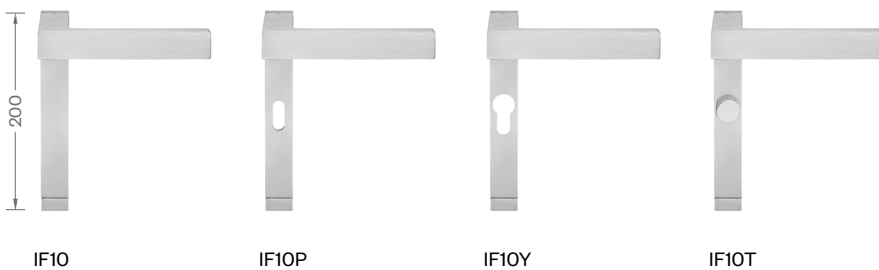
IF31

versioni tecniche / *technical versions*

(IN)finito



(IN)finito corta / *short*



Altre misure disponibili su richiesta /
Other sizes available on request

(IN)finito su rosetta minimale / on minimal rose



IF01

IF01P

IF01Y

IF01T

(IN)finito su placca orizzontale / on horizontal plate



IF11

IF11P

IF11Y

IF11T

versioni tecniche / *technical versions*

(IN)finito su rosetta fine quadra 50x4 mm / *on square fine rose 50x4 mm*



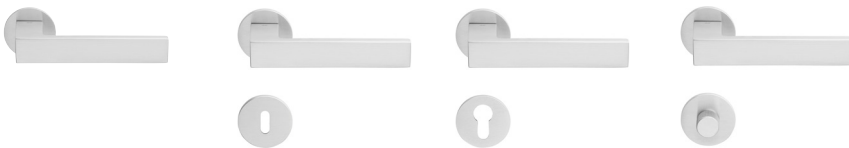
IF41

IF41P

IF41Y

IF41T

(IN)finito su rosetta fine tonda 50x4 mm / *on round fine rose 50x4 mm*



IF40

IF40P

IF40Y

IF40T

(IN)finito maniglione / pull handle



IF27



IF29



IF31

Altre misure disponibili su richiesta /
Other sizes available on request

Dnd Martinelli S.r.l.

Località Piani di Mura, 2
25070 Casto (BS) - Italia

T +39 0365 899113

F +39 0365 899118

info@dndhandles.it

www.dndhandles.it



© 2021 Dnd Martinelli S.r.l.

Tutti i diritti riservati

All rights reserved